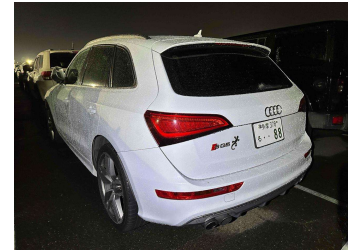
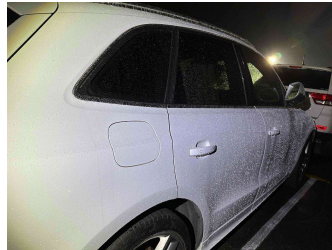


2014 Audi SQ5 3.0 Quattro TFSI 260kW




Purchase Price **\$30,984**

Includes GST
Excludes on-road costs of \$595

Indicative repayments

\$132.20 per week*

Based on a 60 month term & 20% deposit.
Total repayments (260) = \$40,686.61



Gain peace of mind with
Mechanical Breakdown Insurance. Ask us how.



an ASSURANT company

Top features

- » Body Kit (Factory)
- » Central Locking
- » Child seat anchor poin...
- » Climate Control
- » Cruise Control
- » Electric Mirrors
- » Front SRS Airbags
- » Heated Front Seats
- » ISOFIX Child Seat Anch...
- » paddle shift
- » Side Airbags

Body Style
5 door, SUV

Odometer
85,274 km

Engine
3000 cc, Internal Combustion

Fuel Type
Petrol

Transmission
Automatic, All Wheel Drive

Wheels
21"

VIN
-

Interior
-

Safety
-

Reg No.
-

Ext Colour
White

History
-

Seats
5 seats, Leather

CO2 Emissions
-

Energy Economy
-

Stock ID: 1427



Select Autos Tauranga | Phone 07 390 0994 | Email
elliott@selectautostauranga.co.nz
28 Whiore Avenue, Tauriko, Tauranga 3171, New Zealand
www.selectautostauranga.co.nz

* Select Autos Tauranga is not a lender nor a financial adviser. Any amounts displayed should not be seen as an offer of finance or taken as financial advice. The interest rate, fees and loan term used in this calculation may not actually represent those available from lenders. Actual interest rates, fees and loan terms will vary per lender and are typically based on an assessment of your credit risk and responsible lending criteria. Any repayment amounts displayed are indicative only and have been calculated using several other indicative inputs. The interest rate used in this calculation is an arbitrary 11.99%, however exact interest rates vary per lender. The term of the loan used in this calculation is 60 months. Exact terms available vary per lender although options typically include 6, 12, 18, 24, 36, 48 and 60 months. This calculation also includes a typical mandatory fee charged by lenders. This is a one-off establishment fee of \$495.00. Typically, this fee can be paid upfront or, as in this calculation, be capitalised over the contract term, ie. included in the loan amount. This fee can vary per lender and other non-mandatory fees and charges may also apply. The total amount of repayments has been calculated by multiplying 260 weekly repayments (based on a 60 month term) by the weekly repayment amount of \$132.20 which equals \$40,686.61. This calculator does not consider any of your own personal circumstances and we strongly suggest you seek budgeting advice prior to committing to any loan contract. Responsible lending criteria and lender terms and conditions will likely apply to any finalised loan contract. Proof of security and/or vehicle insurance may also be required before proceeding.