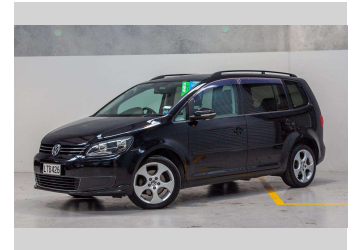
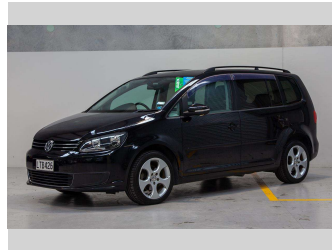
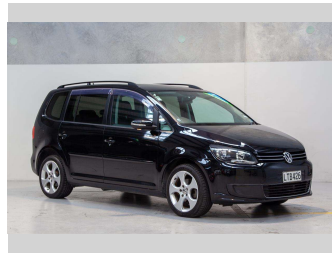
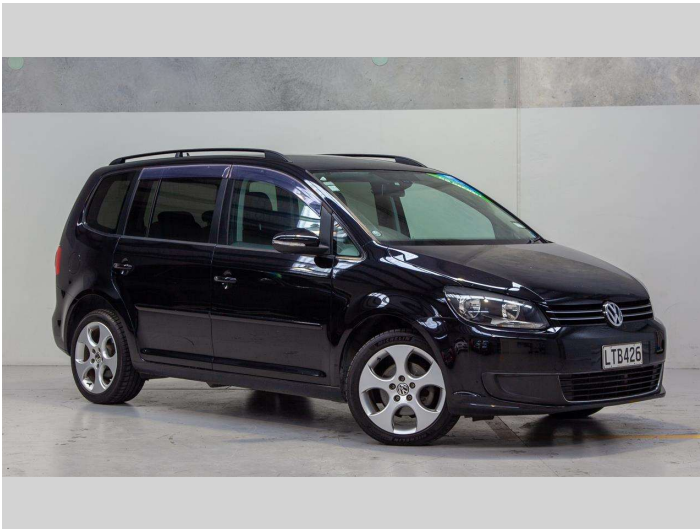



2012 Volkswagen Touran 7 Seat TSI




Purchase Price
Includes GST, Registration & Licensing

\$8,990

Indicative repayments
\$39.45 per week*
Based on a 60 month term & 20% deposit.
Total repayments (260) = \$12,055.25



Gain peace of mind with
Mechanical Breakdown
Insurance. **Ask us how.**



Top features

- » 17" Alloy Wheels
- » ESC - Electronic Stability Control
- » Rear Parking Camera
- » Side Airbags

Body Style
5 door, Station Wagon

Odometer
109,706 km

Engine
1380 cc, Internal Combustion

Fuel Type
Petrol

Transmission
Automatic, Front Wheel

Wheels
17"

VIN
WVGZZZ1TZCW064018

Interior
Black

Safety


Based on 2023 UCSR rating
for 10-13 models

Reg No.
LTB426

Ext Colour
Black

History
Ex-Overseas, 2 owners

Seats
7 seats

CO2 Emissions
★★★★☆
188 grams/km

Energy Economy
★★★★☆

Annual fuel cost of \$3,140
8L per 100km

Cost per year is an estimate based
on petrol price of \$2.80 per litre and
an average distance of 14000 km.
Emissions and Energy Economy
figures standardised to 3P WLTP.

Stock ID: 1387



Select Autos Tauranga | Phone 07 390 0994 | Email
elliott@selectautostauranga.co.nz
28 Whiore Avenue, Tauriko, Tauranga 3171, New Zealand
www.selectautostauranga.co.nz

* Select Autos Tauranga is not a lender nor a financial adviser. Any amounts displayed should not be seen as an offer of finance or taken as financial advice. The interest rate, fees and loan term used in this calculation may not actually represent those available from lenders. Actual interest rates, fees and loan terms will vary per lender and are typically based on an assessment of your credit risk and responsible lending criteria. Any repayment amounts displayed are indicative only and have been calculated using several other indicative inputs. The interest rate used in this calculation is an arbitrary 11.99%, however exact interest rates vary per lender. The term of the loan used in this calculation is 60 months. Exact terms available vary per lender although options typically include 6, 12, 18, 24, 36, 48 and 60 months. This calculation also includes a typical mandatory fee charged by lenders. This is a one-off establishment fee of \$495.00. Typically, this fee can be paid upfront or, as in this calculation, be capitalised over the contract term, ie. included in the loan amount. This fee can vary per lender and other non-mandatory fees and charges may also apply. The total amount of repayments has been calculated by multiplying 260 weekly repayments (based on a 60 month term) by the weekly repayment amount of \$39.45 which equals \$12,055.25. This calculator does not consider any of your own personal circumstances and we strongly suggest you seek budgeting advice prior to committing to any loan contract. Responsible lending criteria and lender terms and conditions will likely apply to any finalised loan contract. Proof of security and/or vehicle insurance may also be required before proceeding.